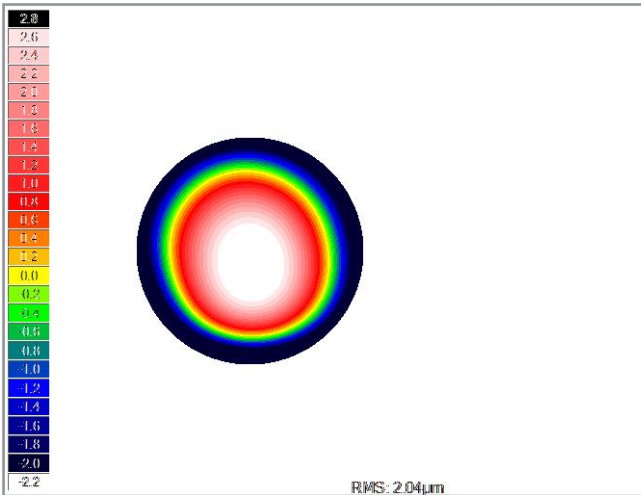
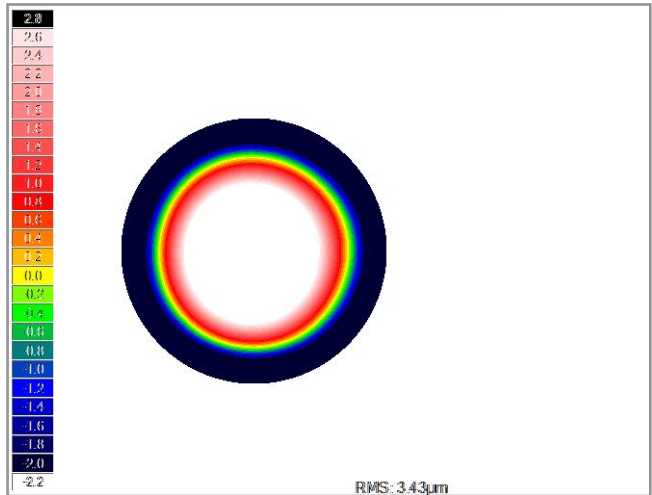


Sunday, June 16, 2019 2:33:10 PM

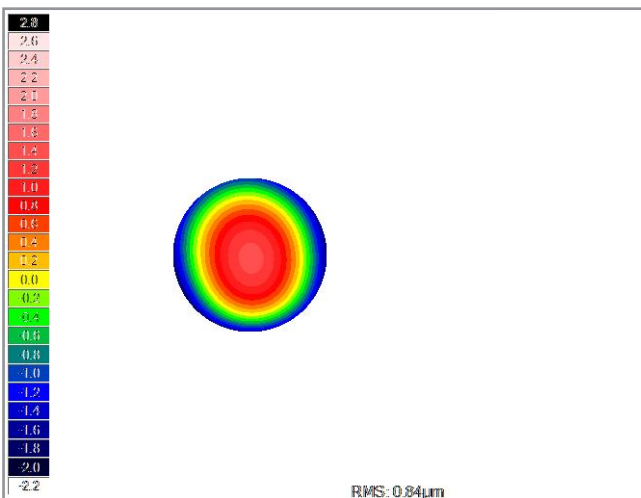
Right: Aberrometry Far, Total, Standard, Meso



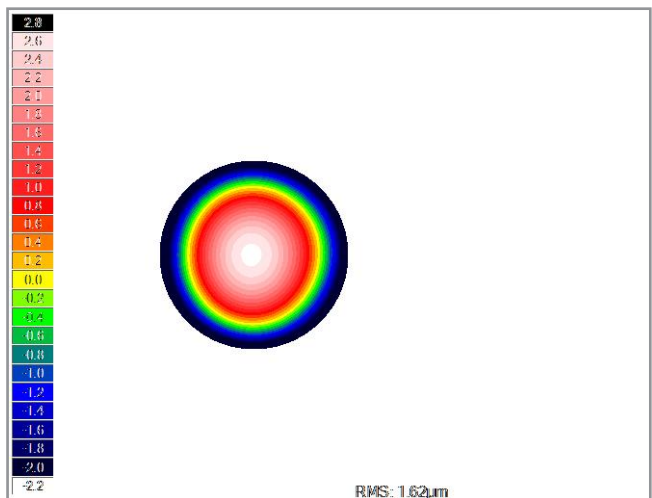
Left: Aberrometry Far, Total, Standard, Meso



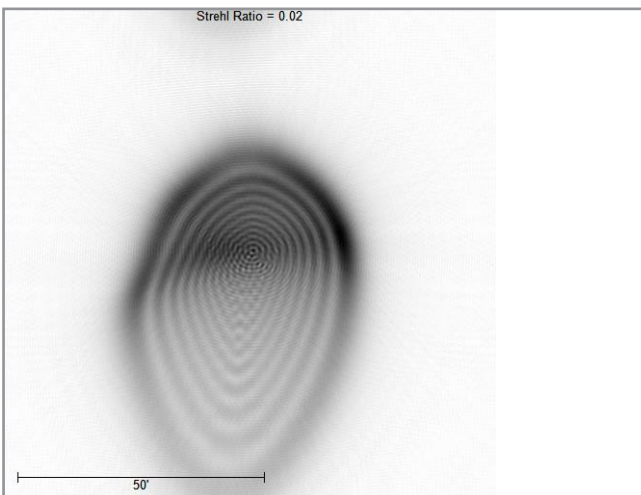
Right: Aberrometry Far, Total, Standard, Photo



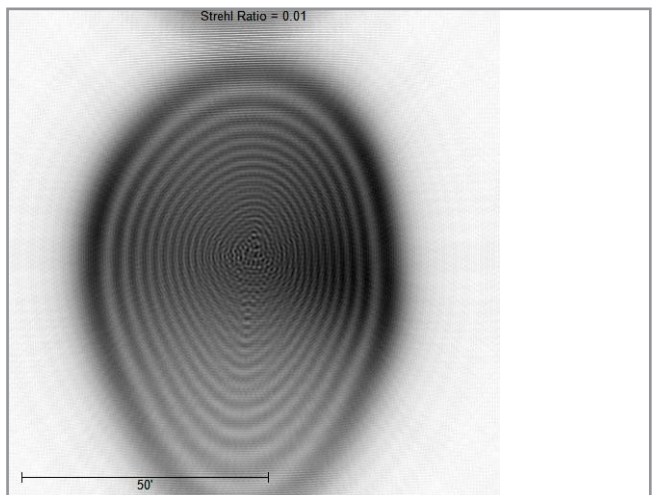
Left: Aberrometry Far, Total, Standard, Photo



Right: Aberrometry Far, PSF, No, Meso



Left: Aberrometry Far, PSF, No, Meso



(R) Rx	Pupil	Sph	Cyl	A
VD:12.0mm	2.5mm	-3.25D	-0.88D	104°
	4.7mm	-4.00D	-0.50D	141°
	NV	-3.13D	-1.25D	105°

(L) Rx	Pupil	Sph	Cyl	A
VD:12.0mm	3.1mm	-4.88D	-0.25D	85°
	5.9mm	-5.13D	-0.38D	176°
	NV	-4.88D	-0.38D	99°

(R) OcularPupil	Defocus	Astigm.	RMS	Coma	Astigm. II
Photo 2.5	0.83µm	0.14µm @ 14°	0.84µm	0.05µm @ 280°	0.03µm @ 90°
Meso 3.7	2.00µm	0.16µm @ 51°	2.04µm	0.28µm @ 266°	0.14µm @ 89°
NV	0.81µm	0.17µm @ 15°	0.82µm	0.02µm @ 200°	0.02µm @ 100°
(L) OcularPupil	Defocus	Astigm.	RMS	Coma	Astigm. II
Photo 3.1	1.62µm	0.06µm @ 175°	1.62µm	0.06µm @ 198°	0.04µm @ 84°
Meso 4.3	3.41µm	0.16µm @ 86°	3.43µm	0.18µm @ 230°	0.15µm @ 86°
NV	1.62µm	0.07µm @ 11°	1.63µm	0.05µm @ 216°	0.02µm @ 103°